

Brief manual for ER simulator v1.0

Mattias Wahde

2008-08-29

General information

- The program runs under Windows XP and Vista.
- The program expects numbers to be entered using decimal point (".") rather than the Swedish standard (decimal comma, ","). If you have a version of Windows that uses decimal comma by default, change the numerical format (Control Panel – Regional and Language options) so that decimal point becomes the standard (The settings can easily be reverted, should you wish to do so).
- You may need to use the same version of OpenGL as is used by the program. If so, extract the files in the zip-file (OpenGLDLLs.zip) and place them in the same folder as the executable.

Instructions

- Download the program (ERSimulator_v1.0.zip) and extract it to an appropriate folder.
- Start the program by double-clicking on the ERSimulator_v1.0.exe icon.

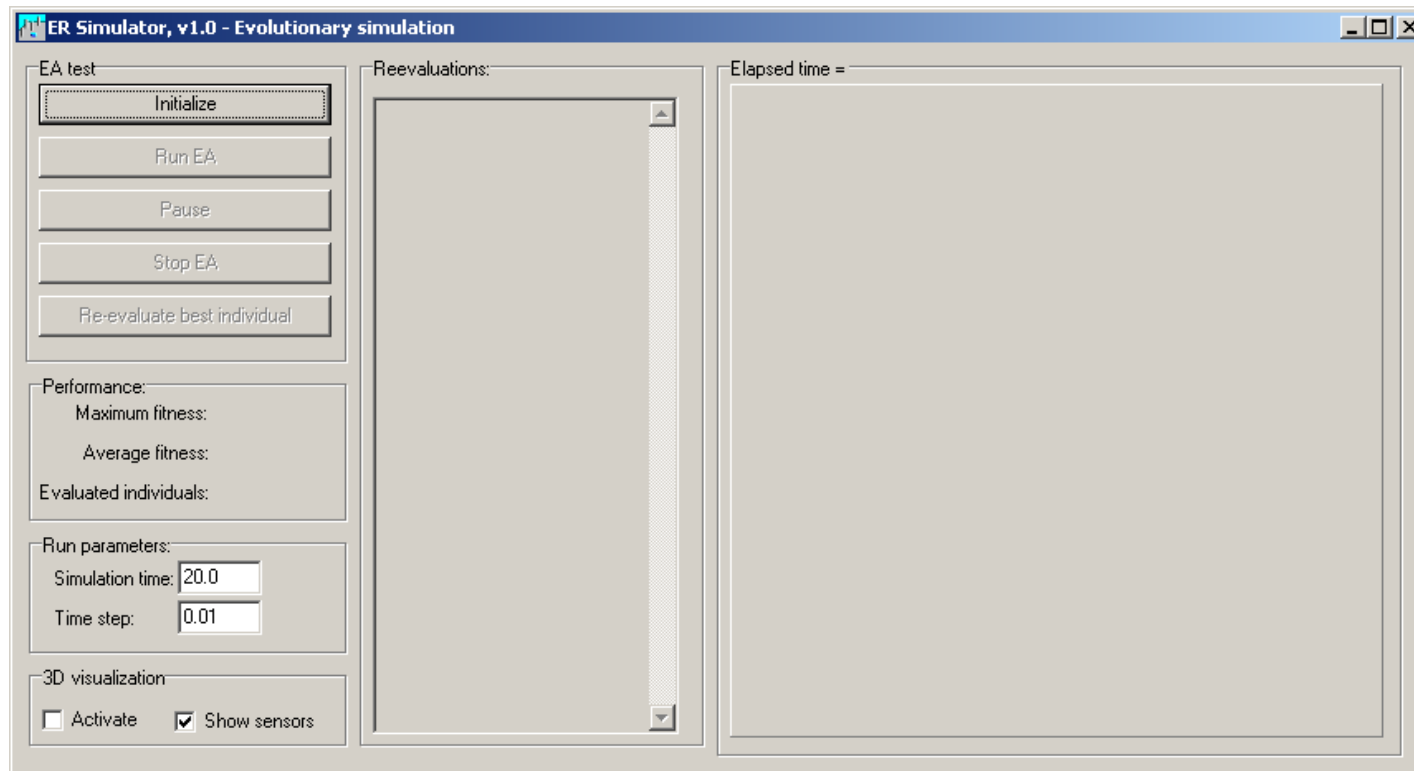


Instructions

- Choose **Setup – Arena**.
- Browse to the Arenas folder, and select the file `experimentarena.txt`.
- Click **OK**
- Choose **Setup – Robot**.
- To begin with, use the default settings: Just click **OK**.
- Choose **Setup – Evolutionary algorithm**.
- To begin with, use the default settings: Just click **OK**.

Instructions

- Choose **Analysis – Run Evolution**



Instructions

- Click **Initialize**
- Click **Run**
- Stop the program by clicking **Pause**.
- Click **Re-evaluate best individual** to view the motion of the best individual.
- Using the mouse, you can change the viewpoint in the 3D window (and zoom as well).
- To continue the evolutionary optimization, click **Resume**.
- To stop the program, click **Stop EA**, and wait for the current generation to be completed.